


Name \_\_\_\_\_

**Directions:** Cut and paste the pictures in the correct box.

# Insect or Not?

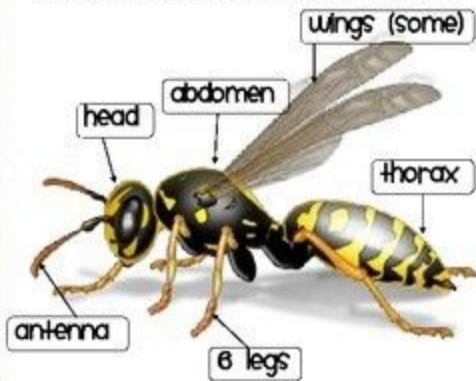
**Insect**

**Not an Insect**



The worksheet features two large empty rectangular boxes for pasting pictures. At the bottom center, there is a line drawing of a boy in a cap and overalls holding a small insect. To his left and right are small flowers. The entire page is framed by a double-line border.

what makes  
an insect?



The Turtle Song

I had a little turtle,  
His name was Tiny Tim.  
I put him in the bath tub,  
To see if he could swim.  
He drank up all the water,  
He ate up all the soap.  
And now he's home, sick in bed,  
With bubbles in his throat.





